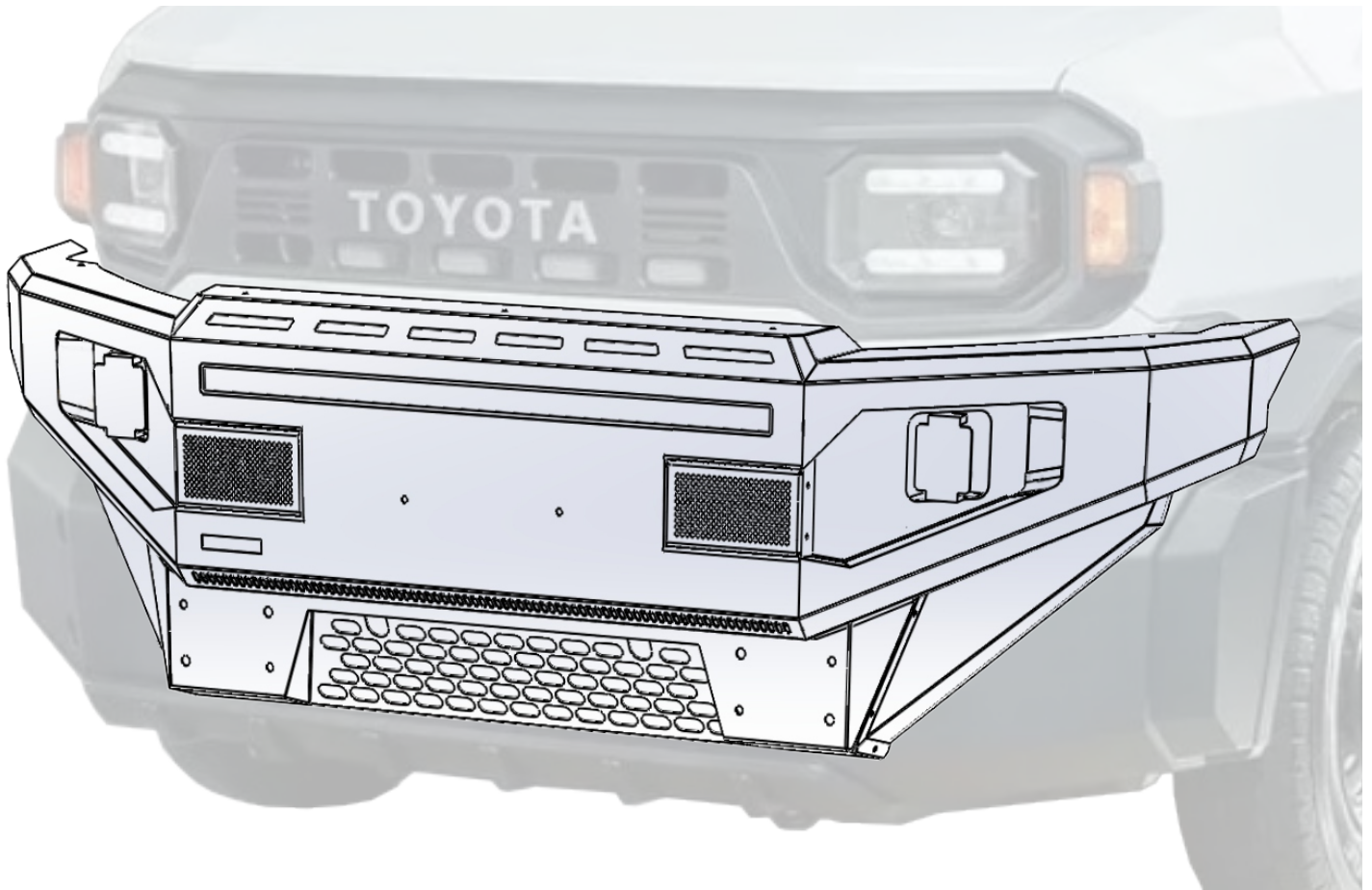


INSTALLATION MANUAL



READ ME FIRST

Before you begin, read and understand this installation manual, take a moment and check all your Maxfort MF-BHR1 components and gather the assembly instructions for the various parts.

Please refer to the next page for a list of all the parts, quantities and tools required.

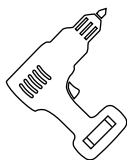
WARNING ! ⚠

Improper installation of this gear may void certain aspects of your warranty. Maxfort will not be responsible for any damage caused by the failure to install the product according to these instructions. Please call us if you have any questions about the installation of this product.

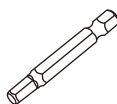
1. TOOLS NEEDED



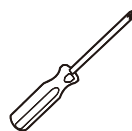
Wrench
13 mm



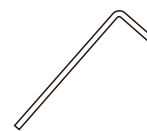
Cordless
Driver



H4 & H5
Allen Wrench
Drill Bit



Screw
Driver

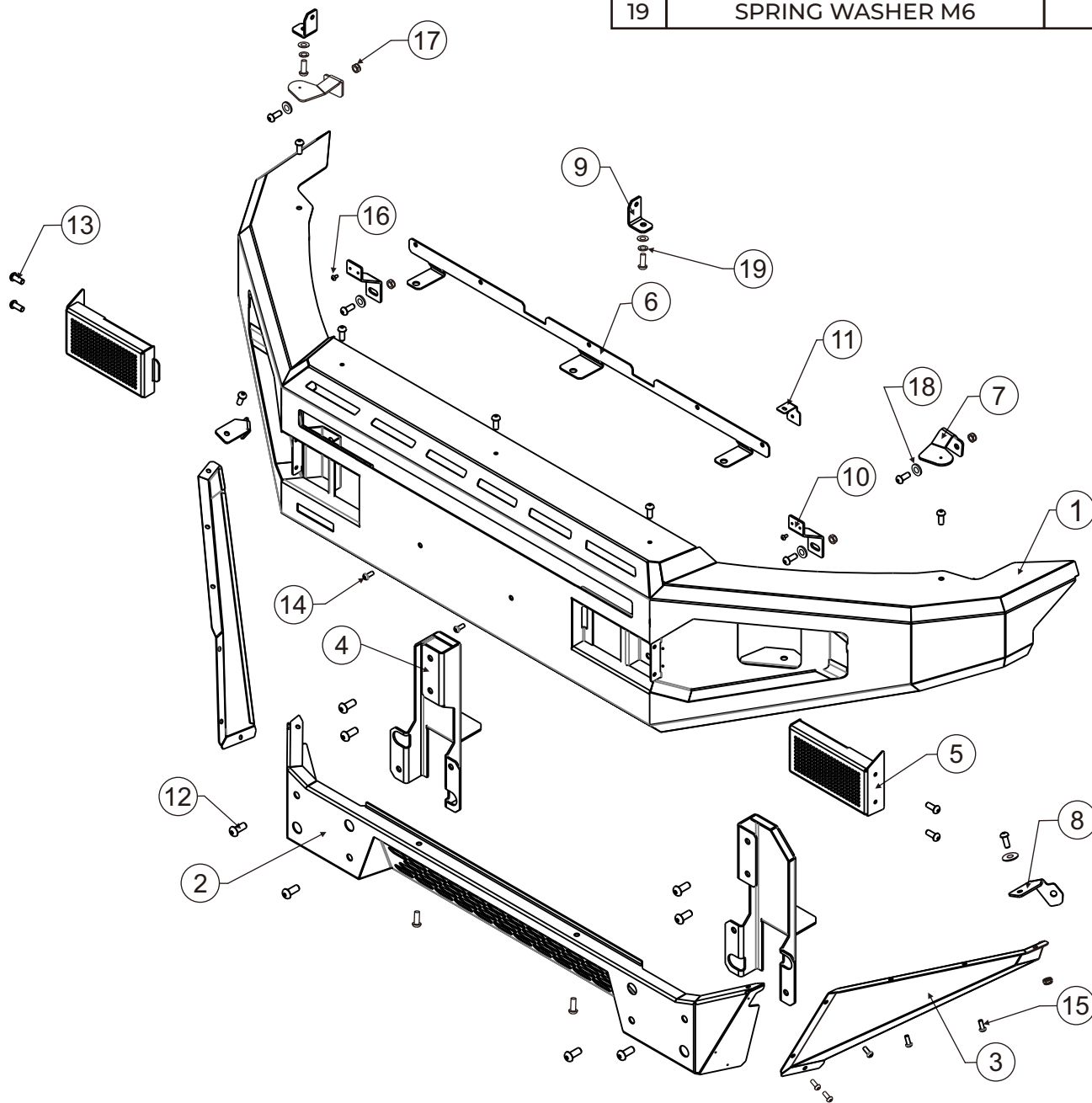


Allen Wrench
H4 & H5

2. PARTS LIST

NO	PART NAME	QTY
1	MAIN BUMPER	1 pcs
2	BOTTOM COVER	1 pcs
3	SIDE COVER	1 set (R-L)
4	CHASIS BRACKET	1 set (R-L)
5	SIDE GRILL	1 set (R-L)
6	TOP BRACKET	1 pcs
7	TOP SIDE SUPPORT	1 set (R-L)
8	BOTTOM SIDE SUPPORT	1 set (R-L)
9	LIGHTBAR BRACKET	1 set (R-L)

NO	PART NAME	QTY
10	EXISTING FENDER BRACKET	1 set (R-L)
11	EXISTING SENSOR BRACKET	1 pcs
12	BUTTON HEAD L-BOLT M10 X 25	8 pcs
13	BUTTON HEAD L-BOLT M8 X 16	19 pcs
14	BUTTON HEAD L-BOLT M6 X 16	4 pcs
15	BUTTON HEAD L-BOLT M6 X 10	12 pcs
16	BOLT M4 X 12	2 pcs
17	LOCK NUT M8	6 pcs
18	FLAT WASHER M8 X 18 X 1.5	6 pcs
19	SPRING WASHER M6	2 pcs

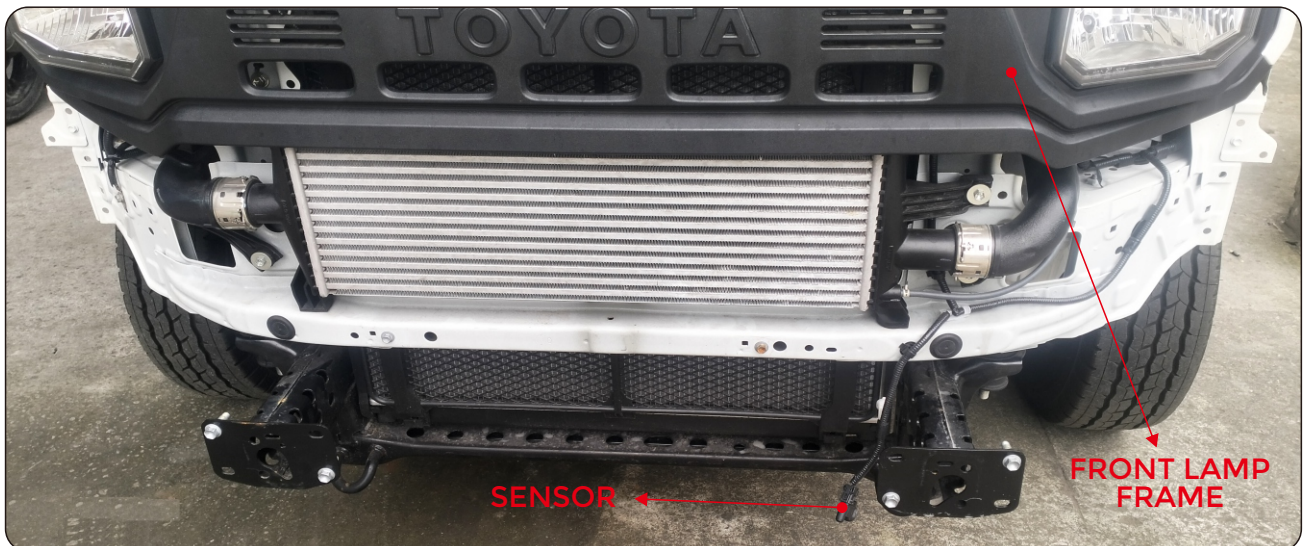


3. INSTALLATION

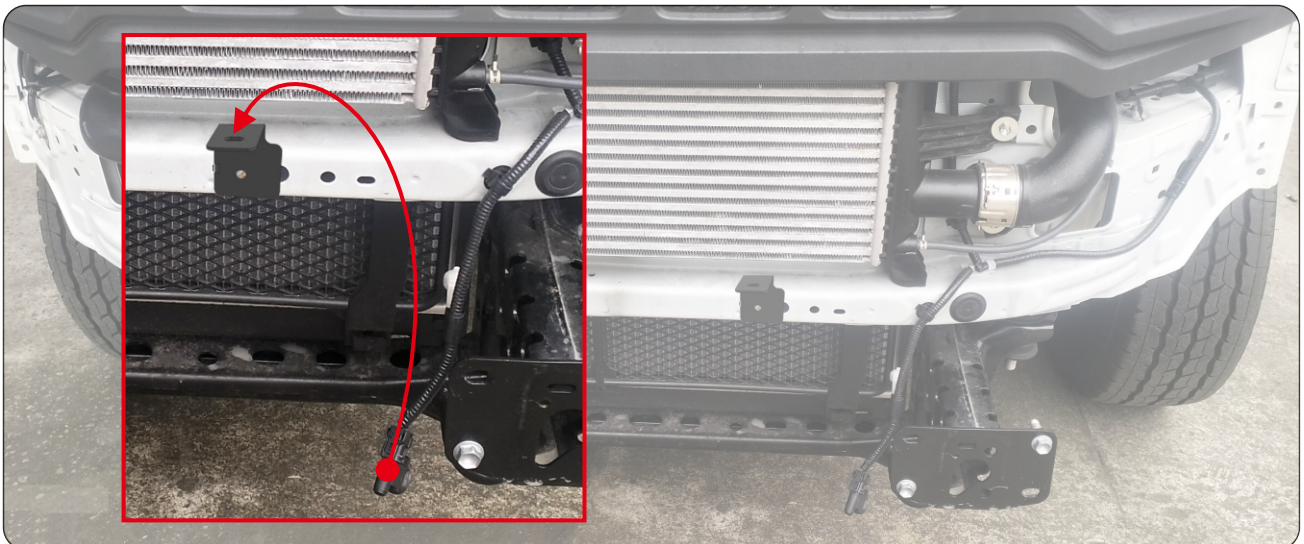
1. Remove existing grill and front bumper



2. Remove another existing part inside, until we get it like in the picture below.



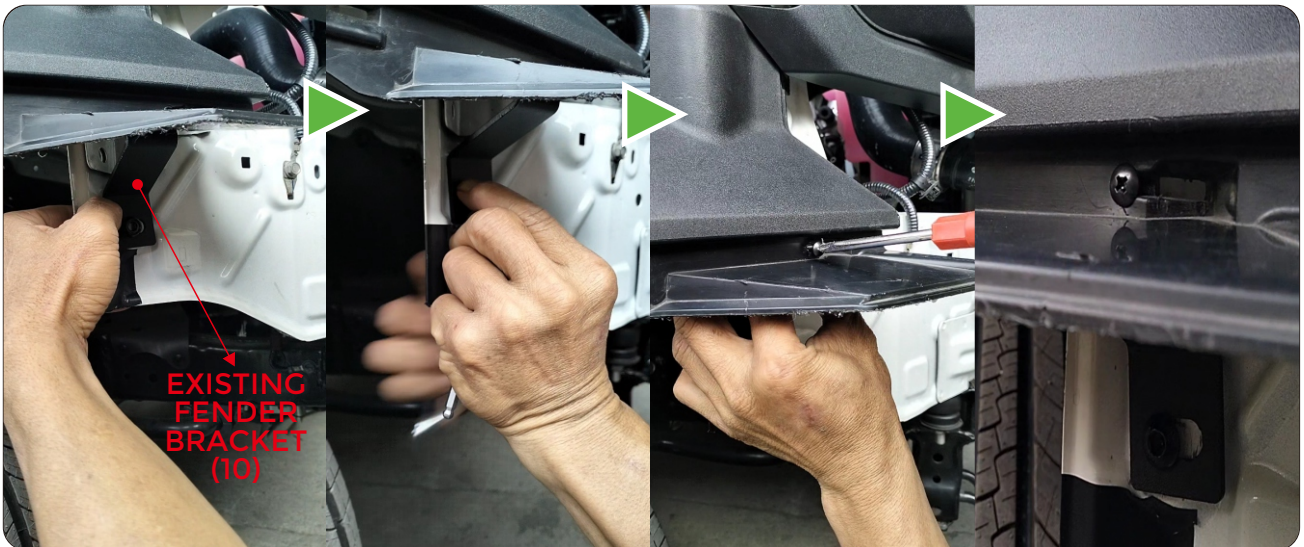
3. Attach the **Sensor Bracket (11)** using the previously removed hex bolts, and plug in the sensor to **Sensor Bracket (11)**.



4. Remove the front lamp frame to attach **Top Bracket (6)** to the front lamp frame. Secure using the previously removed screws.



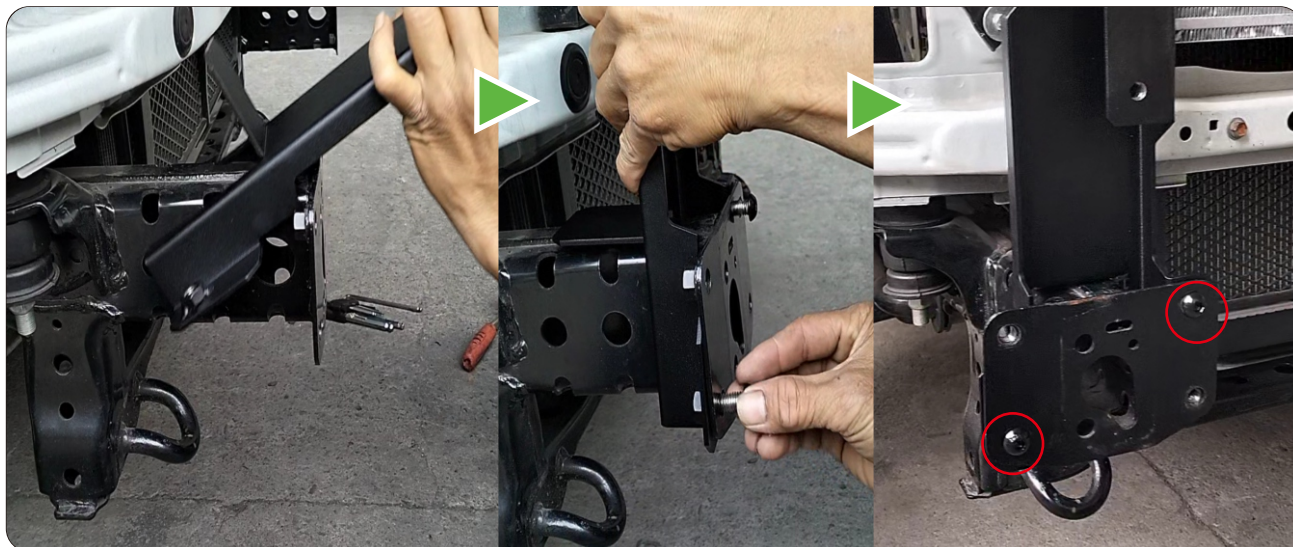
5. Attach the **Existing Fender Bracket (10)** at both side (R-L) . Secure front fender using **M4 x 12 bolt (16)**



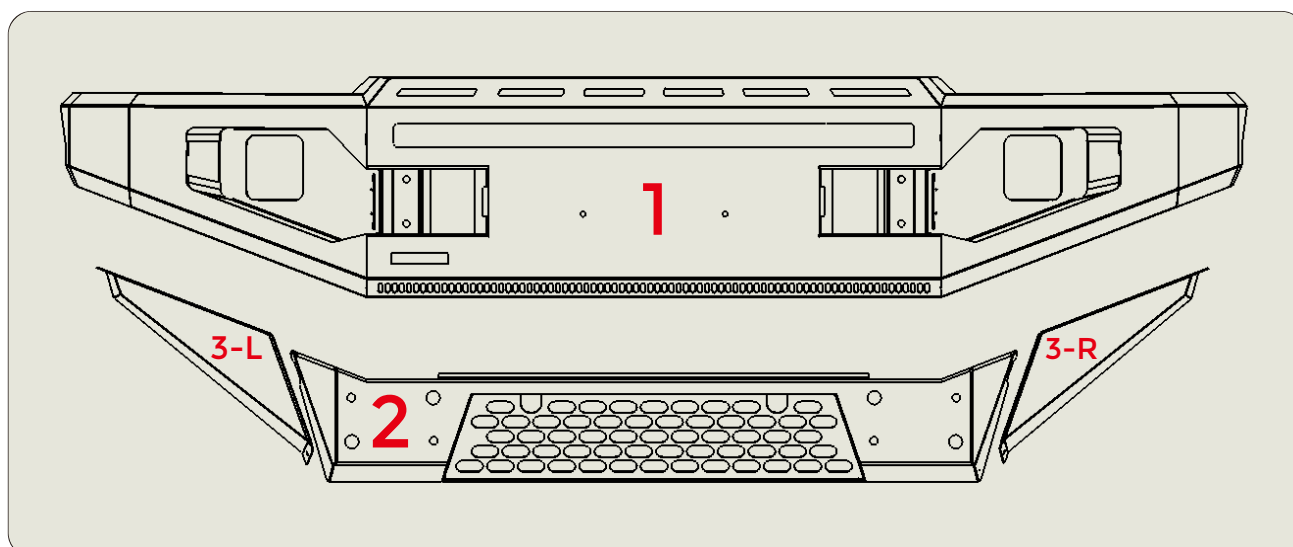
6. Attach the **Top Side Support (7)** at both side (R-L). Secure using **M8x16 Bolt (13)** and **M8 Lock Nut (17)**.



7. Attach the **Chasis Bracket (4)** at the Left and Right using **M10 x 25 bolts (12)**.



8. Assembly this four part ; **Main Bumper (1)**, **Bottom Cover (2)** and **Side Cover R-L (3)** into one unit using **M8 x 16** and **M6 x 10** bolts.



9. First step to Assembly (step No 8) is attach **Bottom Cover (2)** to **Main Bumper (1)** using **M8 x 16 (13)** and **M6 x 10 (15)** bolts.



10. Second step for **Assembly** (step no 8) is attaching 2 **Side Cover R-L (3)** at both side using **M6 x10 bolts (15)**.



11. After the **Assembly no 8** is ready, next step is installing 2 **Side Lamp**. Attach side lamp to its mount at both side, **Right and Left**.



12. Next step is install the **Lighbar**. The **Lighbar** must be 30 inch long. See picture below for position. Secure it with **M6 x 16 bolt (14)**, spring washer and flat washer.



13. After "step no 8" and the Lights is all sets, we're going to attach this assembled bumper to vehicle. Lift the assembled bumper into place and align the hole to all brackets that already installed before.



14. Secure middle part Assembled Bumper to Chasis Bracket (4) using M10 x 25 bolt (12).



15. Secure bottom part Assembled Bumper to Chasis Bracket (4) using M10 x 25 bolts (12).



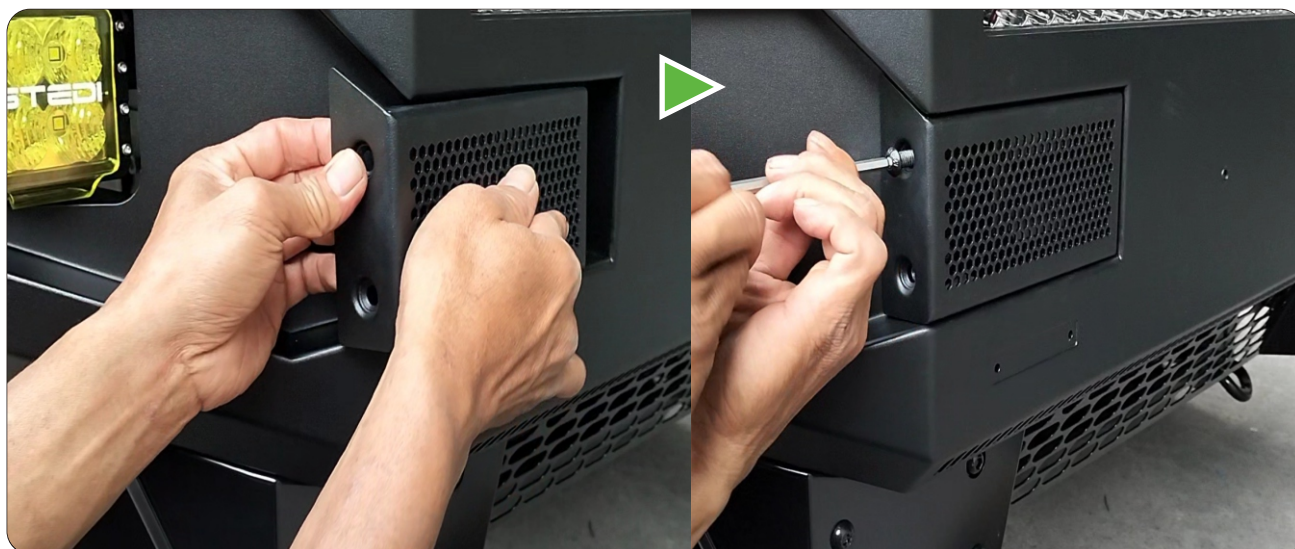
16. Secure the top Assembled Bumper to Top Bracket (6) using M8 x 16 bolts (13).



17. Attach Bottom Side Support (8) and secure it using 2 M8 x 16 bolts (13), flat washer and M8 Lock Nut (17).



18. Tighten all the bolts. Final step is installing Side Grill (5) at both side Left and Right. secure using M8 x 16 bolt (13).



4. NOTES

This image shows a full page of white paper with horizontal dashed lines, typical of primary-ruled notebook paper. The lines are evenly spaced and run across the width of the page. There are no margins, text, or other markings on the paper.