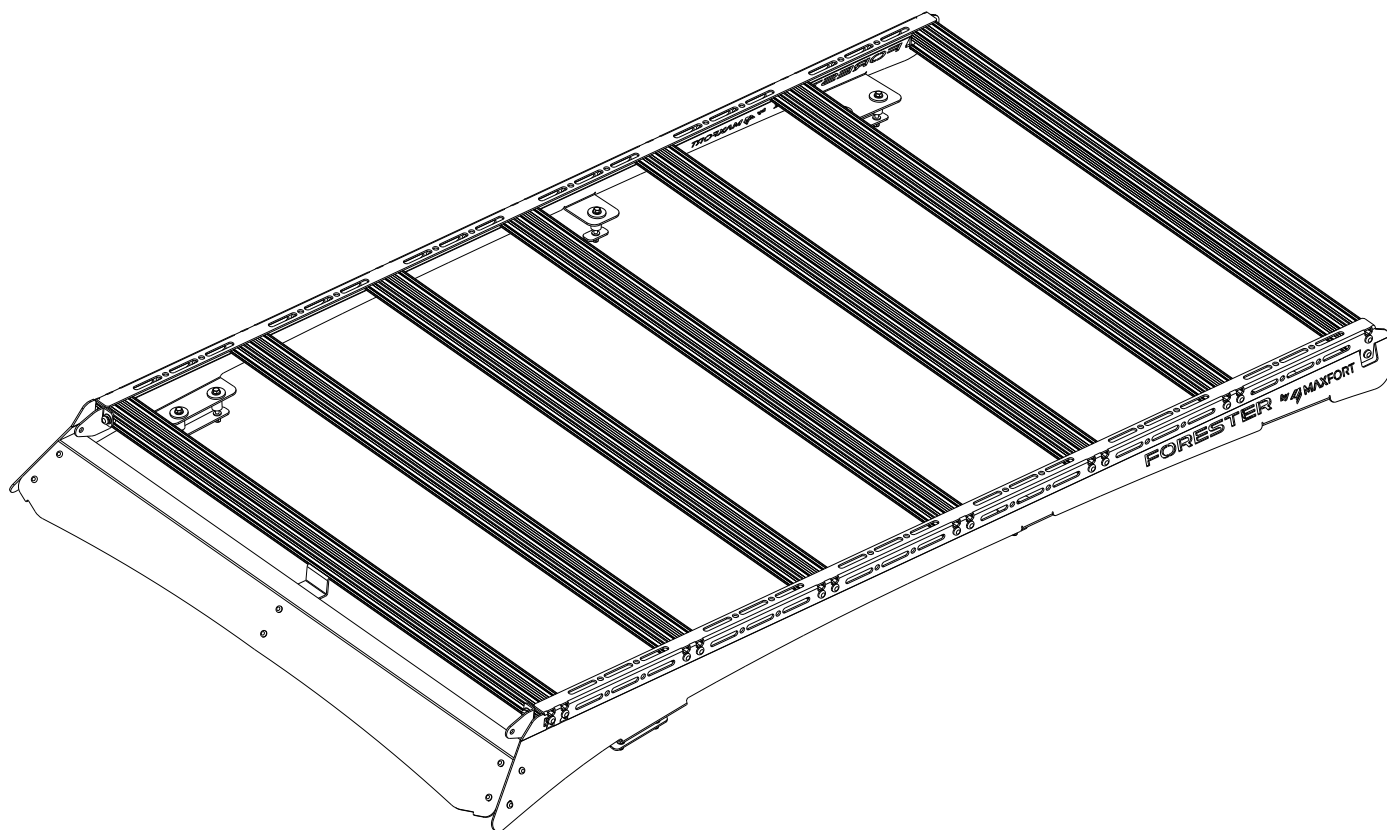


INSTALLATION MANUAL



READ ME FIRST

Before you begin, read and understand this installation manual, take a moment and check all your Maxfort MF-SFT24 components and gather the assembly instructions for the various parts.

Please refer to the next page for a list of all the parts, quantities and tools required.

WARNING ! ⚠

Improper installation of this gear may void certain aspects of your warranty.

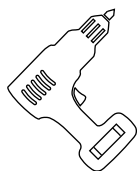
Maxfort will not be responsible for any damage caused by the failure to install the product according to these instructions.

Please call us if you have any questions about the installation of this product.

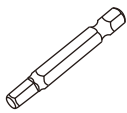
1. TOOLS NEEDED



Wrench
10 mm



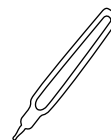
Cordless
Driver



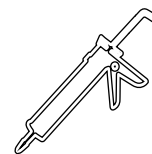
H4 & H5
Allen Wrench
Drill Bit



Measuring
Tape



Marker

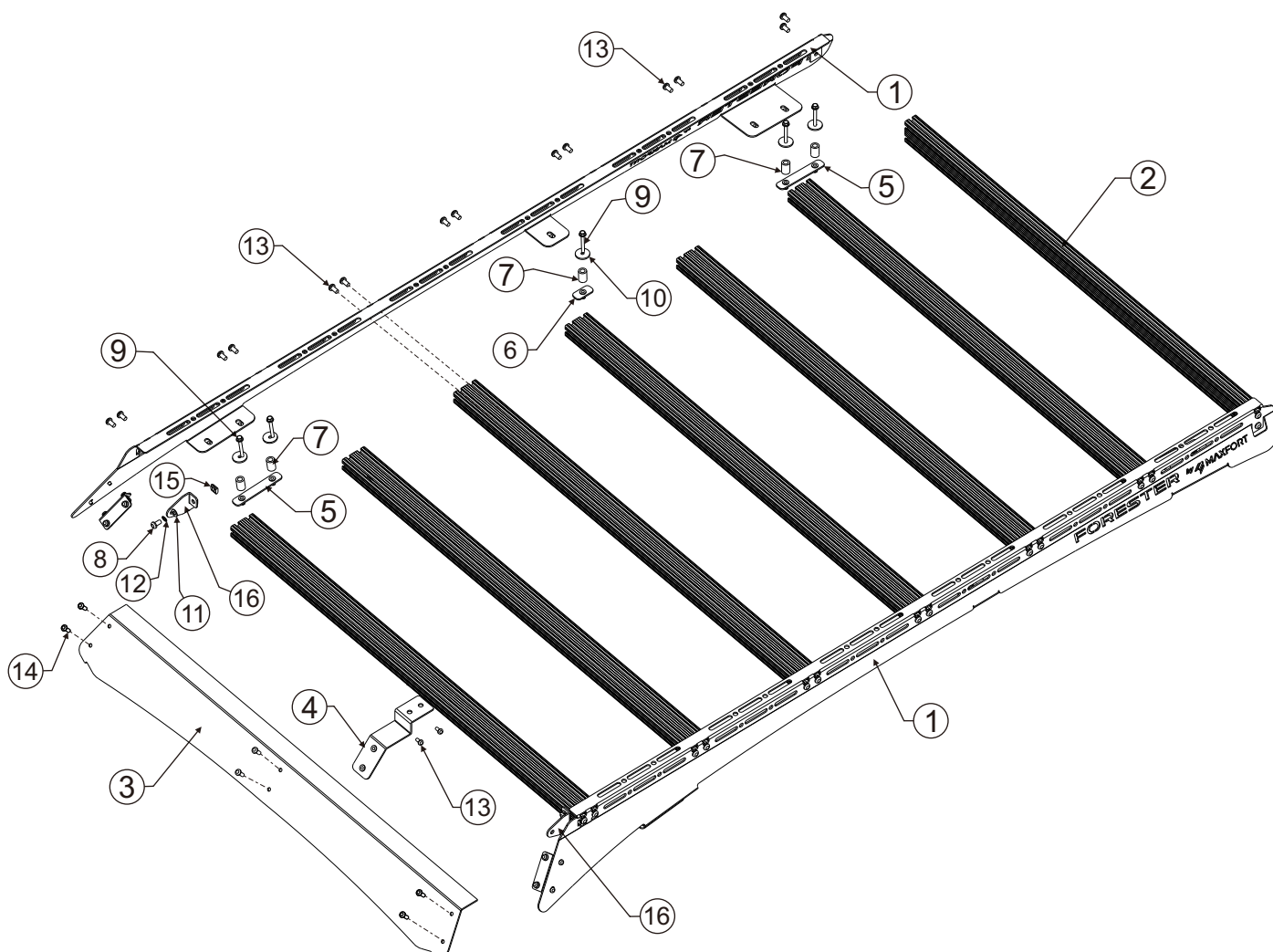


Sealant

2. PARTS LIST

NO	PART NAME	QTY
1	SIDE MOUNT	1 set (R-L)
2	NARROW SLAT 1140 MM	7 pcs
3	WIND FAIRING	1 pcs
4	WIND FAIRING SUPPORT	1 pcs
5	NUT PLATE A	4 pcs
6	NUT PLATE B	2 pcs
7	SPACER Ø 17 X 25	10 pcs
8	HEXAGONAL BOLT M8X15	2 pcs

NO	PART NAME	QTY
9	HEX BOLT M6 X 50	10 pcs
10	FLAT WASHER M6 X 30 X 3	10 pcs
11	FLAT WASHER M8 X 18 X 1.5	4 pcs
12	SPRING WASHER M8 X 13 X 2	4 pcs
13	L BUTTON HEAD BOLT M8 X 15	32 pcs
14	L BUTTON HEAD BOLT M6 X 15	10 pcs
15	T SLOT NUT M8	4 pcs
16	LED LIGHTBAR BRACKET	1 pair



3. INSTALLATION

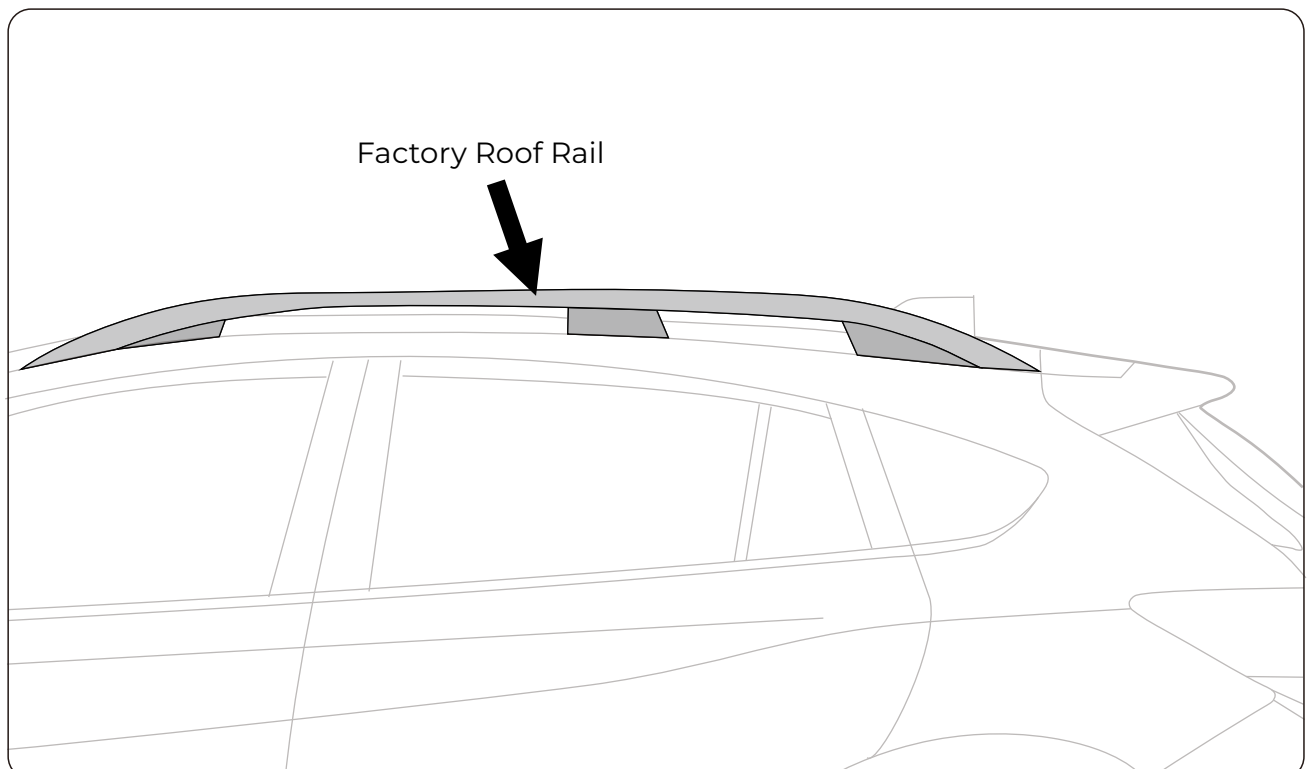
3.1 VEHICLE ROOF LINING

Drop the vehicle's roof lining. ⚠️ **Look online for videos to assist** ⚠️



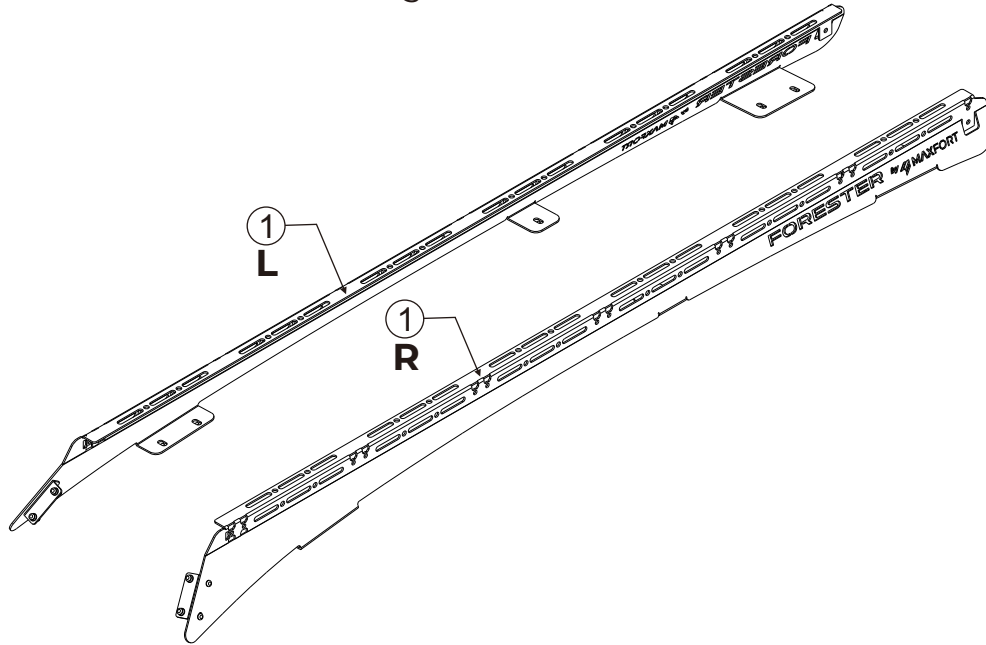
3.2 FACTORY ROOF RAIL

Remove the vehicle's Factory Roof Rails. ⚠️ **Look online for videos to assist** ⚠️



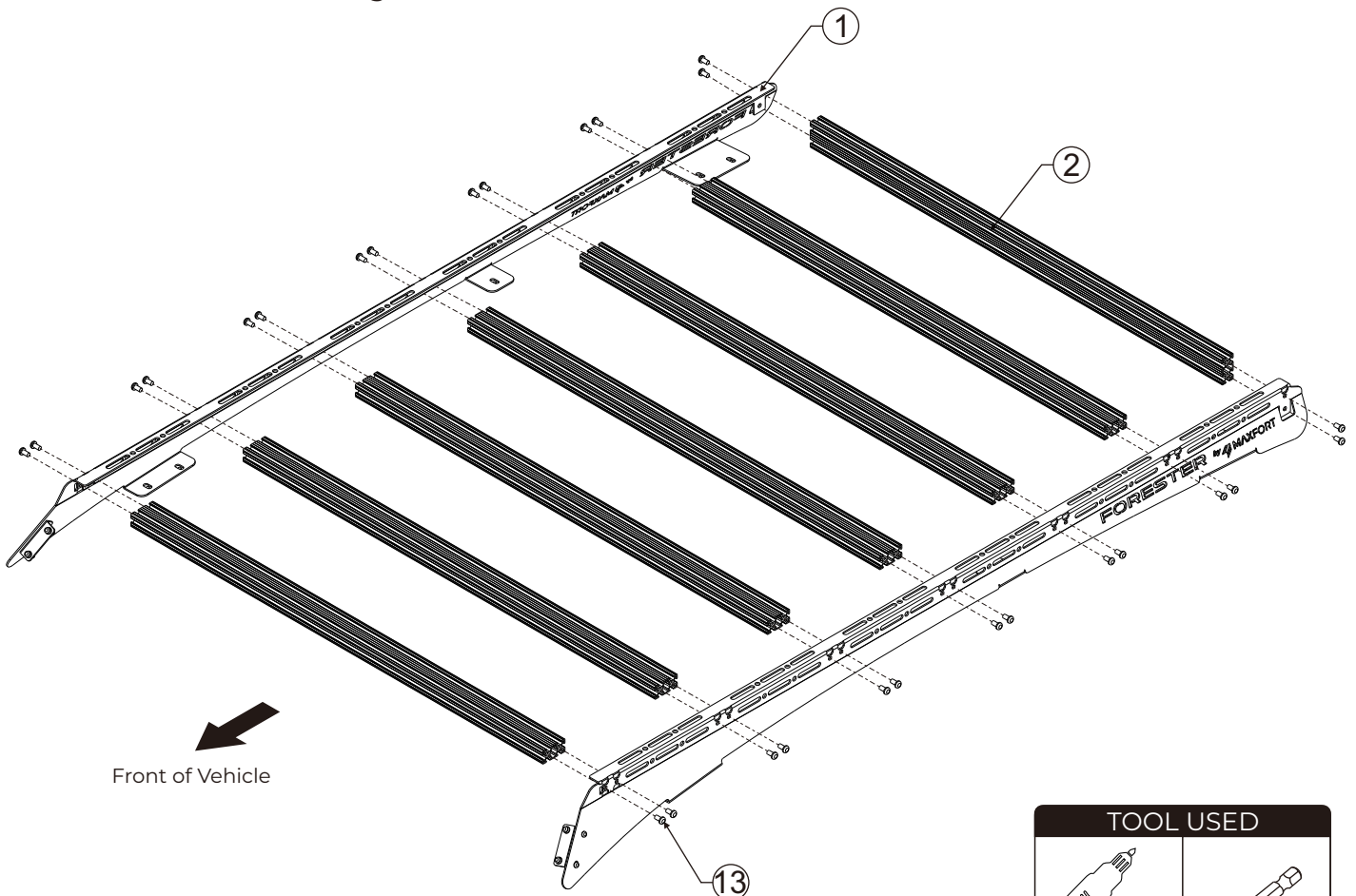
3.3 SIDE MOUNT

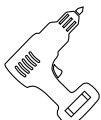
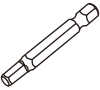
The Side Mount (item 1) is already assembled, we have 2 different side of Side Mount that is Left and Right.



3.4 NARROW SLATS

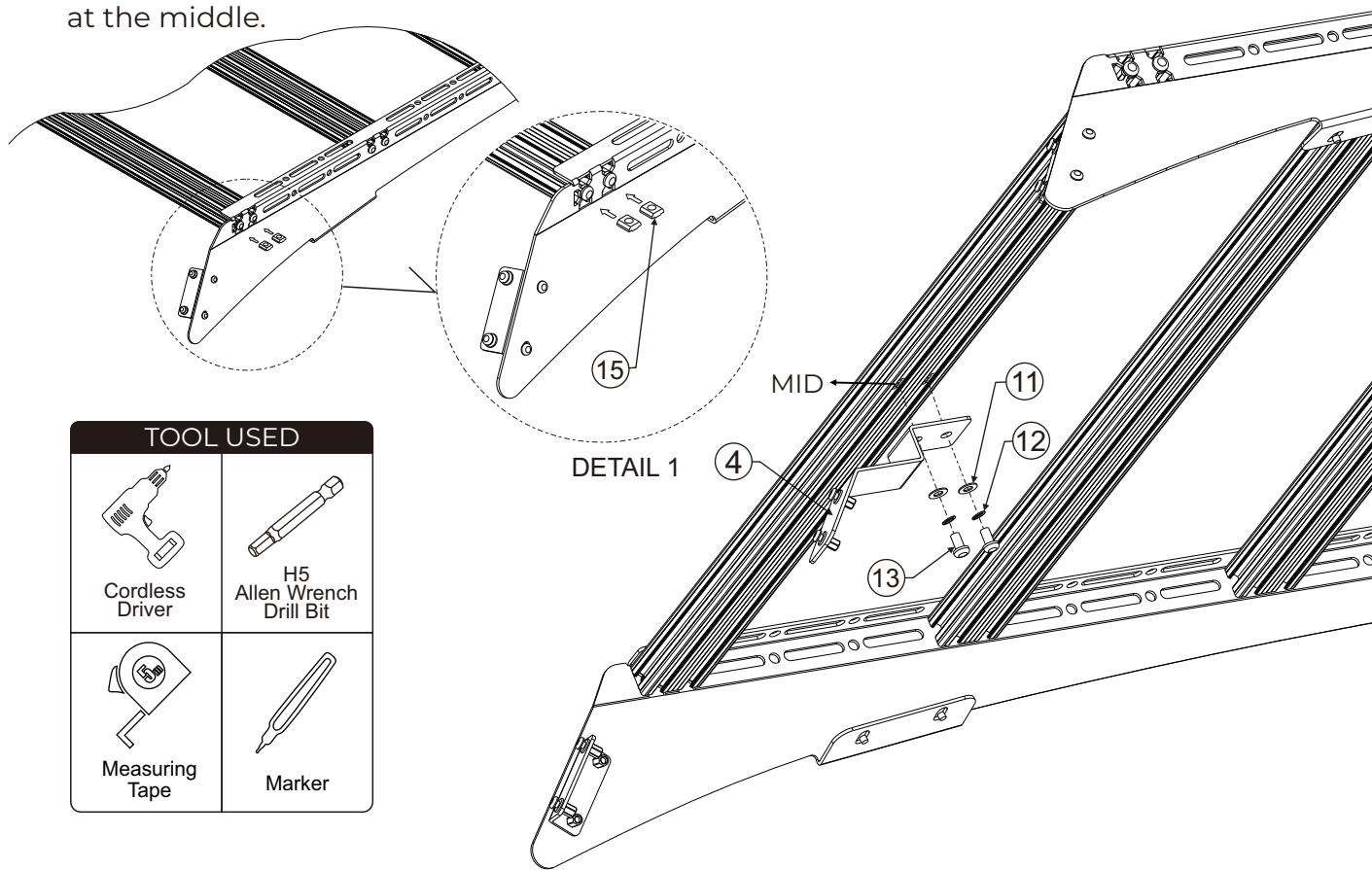
Assemble eight Narrow Slats (item No 2) to Side Mount (item 1) using M8 x 15 bolt (item No 13). Tightening torque 8-10Nm / 5.9 ft lb - 7.38 ft lb. Take care when using a cordless driver.



TOOL USED	
	
Cordless Driver	H5 Allen Wrench Drill Bit

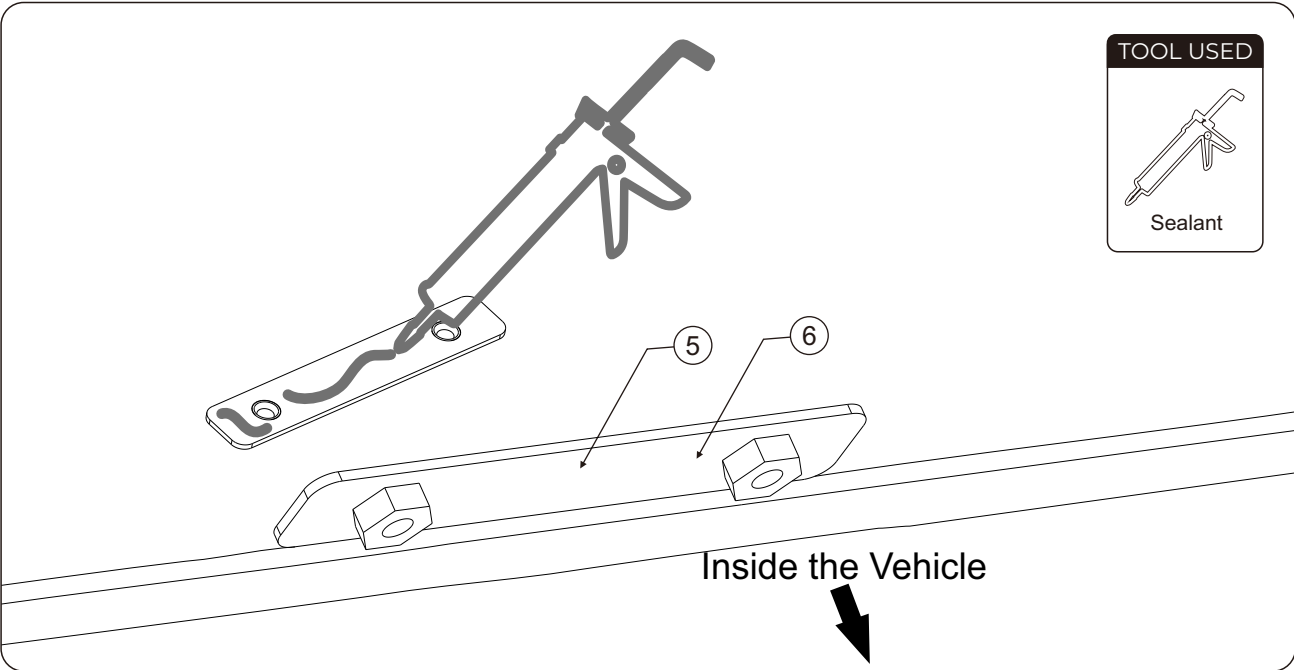
3.5 WIND FAIRING SUPPORT

Insert the T Slot Nut (item 15) and slide to its position that is at the middle. Attach the Wind Fairing Support using M8 x 15 bolt (item 13), M8 x 18 x 1.5 flat washers (item 11) and M8 x 18 x 1.5 spring washers (item 12). Use measuring tape and marker to set up the position at the middle.



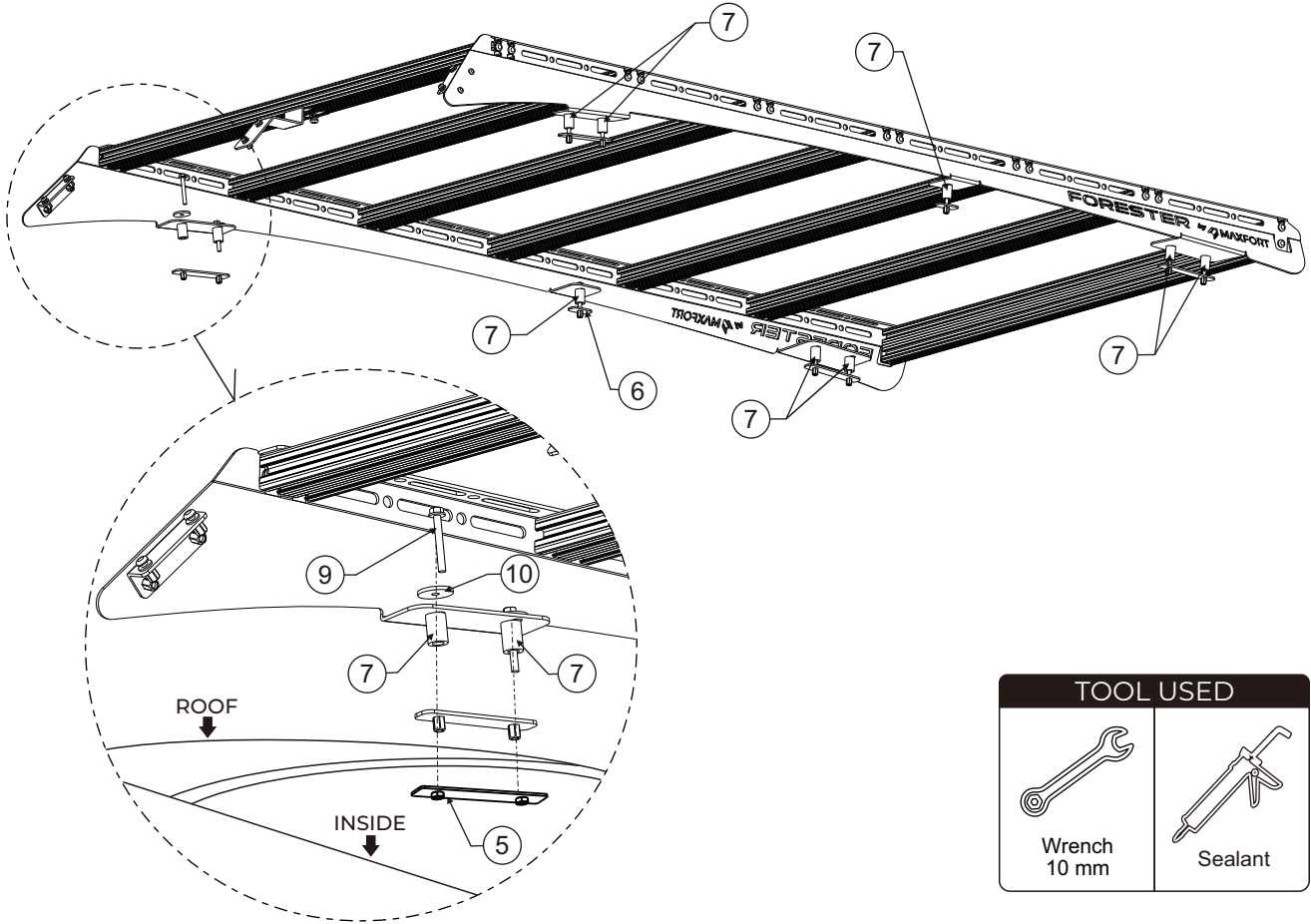
3.6 NUT PLATE

We have two kind of Nut Plate here, it's Nut Plate A (item 5) and Nut Plate B (item 6). Nut Plate B is installed at the rear of the rack. Nut Plate A is installed at the middle and front of the rack. Apply a bead of silicone on the flat side of each of the six Nut Plates when you assemble them. This will retain them to the inside of the roof, if you decide to remove the rack.



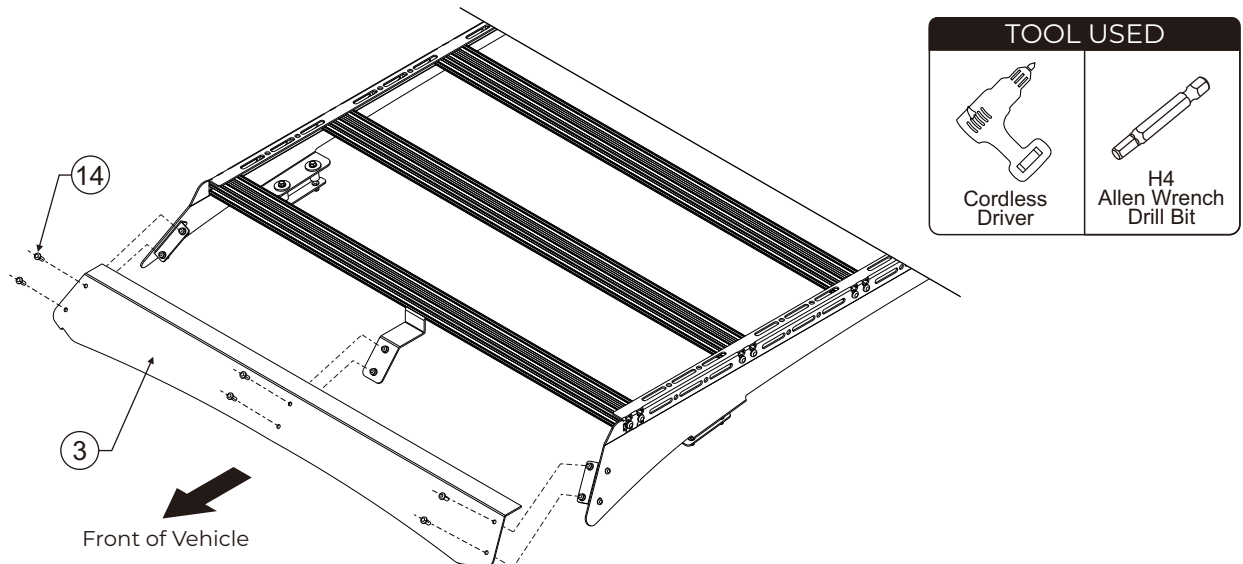
3.7 SPACER

Apply Sealant over the 10 holes on the outside of the roof. Place Spacers over the holes, spacers (item 7) are installed in the front, middle and rear of the rack. Apply the bead of sealant on threads of the M6 X 50 Hex Bolts and secure Maxfort Roof Rack MF-SFT24 to the Nut Plates inserted in (see chapter 3.6) using M6 x 50 Hex Bolts (item 9) and M6 x 30 x 3 Flat Washers (item 10).



3.8 WIND FAIRING

Center the Wind Fairing (item 3) and position the Wind Fairing Support (item 4) aligning the slotted holes. Secure the Wind Fairing to the bracket, using M6 x 15 Bolts (item 14). Fully tighten the wind fairing to the brackets.



3.9 LED LIGHT BAR BRACKET

1. Determine LED Lightbar Size:

Ensure your LED light bar size matches the bracket specifications.

(2 brackets options available)

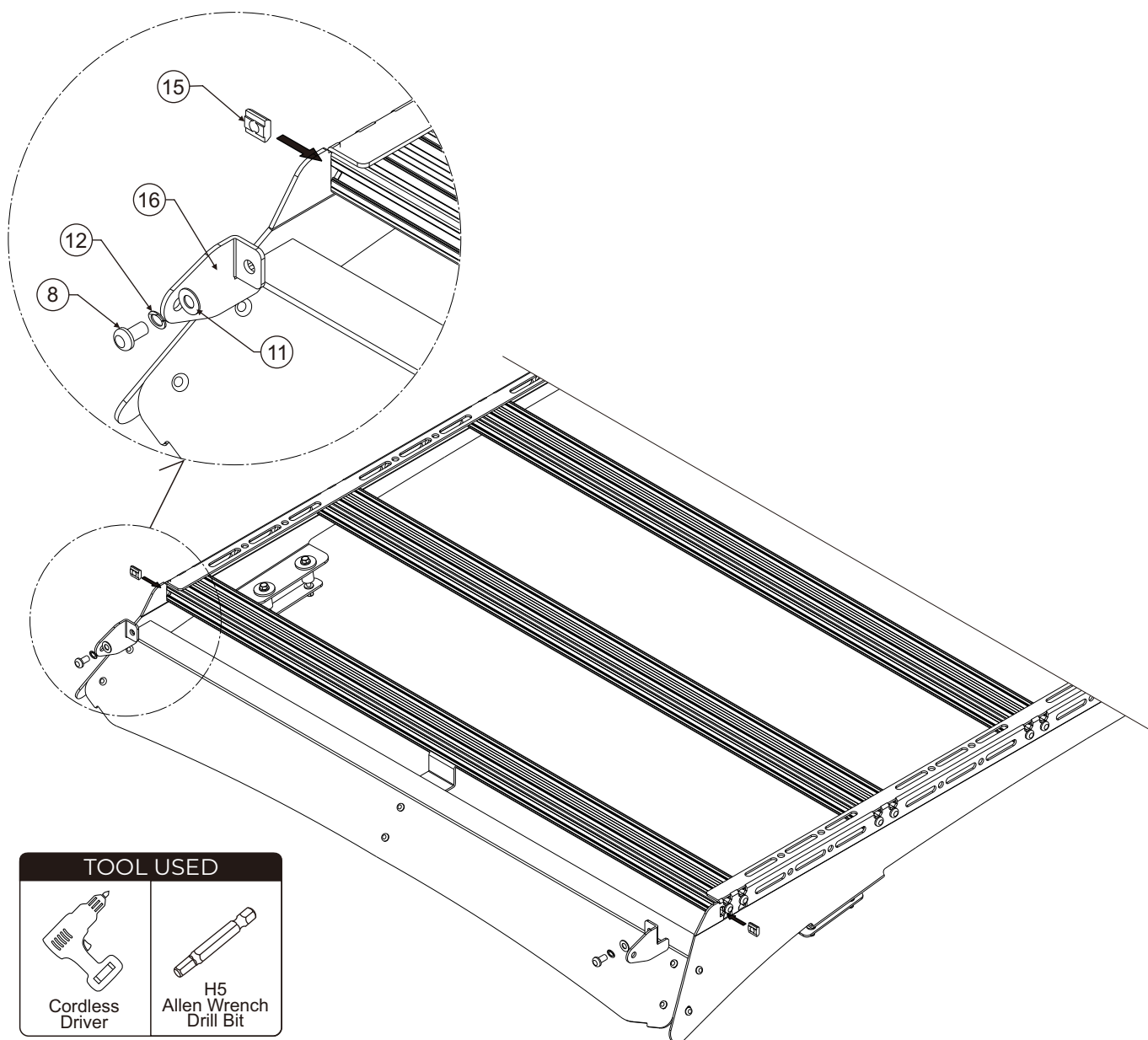
2. Optional Bracket Installation:

Attach the bracket only if you are installing an LED light bar.

3. Bracket Attachment:

Insert the T Slot Nut (item 15) and slide to its position depending on your LED light bar length. Attach the LED light bar bracket (item 16) to T slot nut that already in its position.

Secure the LED Light Bar Bracket using hexagonal bolt M8 x 15 (item 8), flat washer M8 x 18 x 1.5 and spring washer M8 x 13 x 2 (item 12).



4. NOTES

This image shows a full page of white paper with horizontal dashed lines, typical of primary-ruled notebook paper. The lines are evenly spaced and run across the width of the page. There are no margins, text, or other markings on the paper.